



The following is a summary of standard socket usage by module series.

RO Series	9741/ 9741LF	9890/ 9890LF	9871/ 9871LF	9740/ 9740LF	9748/ 9748LF	9894/ 9894LF	9872/ 9872LF
HH1199-6 Filter					5		
nV48 Series	6			6			
nV300 Series	6		2	4			
MV380 Series			6			2	
MV48 Series			9				4
PFC Series			7				
pV48 Series			6		2		
pV300 Series			6		2		
QV28 Series			6	2			
QV48 Series			6	2			
SV28 Series		7			2		
SV48 Series		7			2		
SVD48 Series		10					
SYV48 Series		7			2		
SYVHC48 Series		7			4		
μV28 Series (singles)		1	8				2
μV28 Series (triples)			13			2	
μV300 Series (singles)		1	6				2
μV300 Series (triples)			11			2	
μV48 Series (singles)		1	8				2
μV48 Series (triples)			13			2	

The following is a compilation of electrical and mechanical data for the sockets offered by RO.

RO Part #	9741	9741LF
Description:	Socket, 0.025 SQ. PIN	Socket, 0.025 SQ. PIN
Manufacturer:	Tyco (Amp)	Tyco (Amp)
Manuf. Part #	50864-1	50864
Contact Resistance:	< 15 mΩ	< 15 mΩ
Insert/ Extract Force:	min 0.5 oz., max 56 oz.	min 0.5 oz., max 56 oz.
Internal Hole Depth:	0.244 in min.	0.244 in min.
PCB Hole Size:	0.065 ±0.002	0.065 ±0.002
Materials:	copper (body), Beryllium copper (spring)	copper (body), Beryllium copper (spring)
Plating:	electro-tin (body), gold over nickel (spring)	gold over nickel (body), gold over nickel (spring)

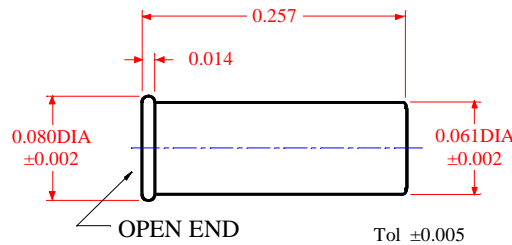


Figure 1 RO Socket # 9741/ 9741LF Mechanical Dimensions

RO Part #	9890	9890LF
Description:	Socket, 0.040 DIA. PIN	Socket, 0.040 DIA. PIN
Manufacturer:	Cambion	Cambion
Manuf. Part #	450-3716-01-06-00 or (RO's choice) 450-3716-01-03-00	450-3716-01-06-00 or 450-3716-01-03-00
Contact Resistance:	1.0 mΩ	1.0 mΩ
Extraction Force:	min 6 oz., max 20 oz.	min 6 oz., max 20 oz.
Internal Hole Depth:	0.190 in min.	0.190 in min.
PCB Hole Size:	0.076 +0.002, -0.001 in	0.076 +0.002, -0.001 in
Materials:	copper (body), Beryllium copper (spring)	copper (body), Beryllium copper (spring)
Plating:	electro-tin or gold over (RO's choice) nickel (body), gold over nickel (spring)	electro-tin or gold over nickel (body), gold over nickel (spring)

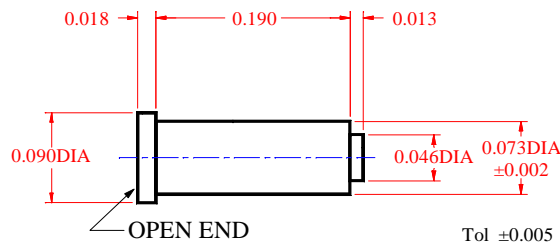


Figure 2 RO Socket # 9890/ 9890LF Mechanical Dimensions

RO Part #	9871	9871LF
Description:	Socket, 0.040 DIA. PIN	Socket, 0.040 DIA. PIN
Manufacturer:	Hypertronics	Hypertronics
Manuf. Part #	YSK0102-004 AH	YSK0102-004 AH
Contact Resistance:	< 2.5 mΩ	< 2.5 mΩ
Extraction Force:	min 1 oz., max 3.9 oz.	min 1 oz., max 3.9 oz.
Internal Hole Depth:	0.240 in min.	0.240 in min.
PCB Hole Size:	0.110 ±0.002 in	0.110 ±0.002 in
Materials:	brass (body), Beryllium copper (wires)	brass (body), Beryllium copper (wires)
Plating:	gold over nickel (body), gold over nickel (wires)	gold over nickel (body), gold over nickel (wires)

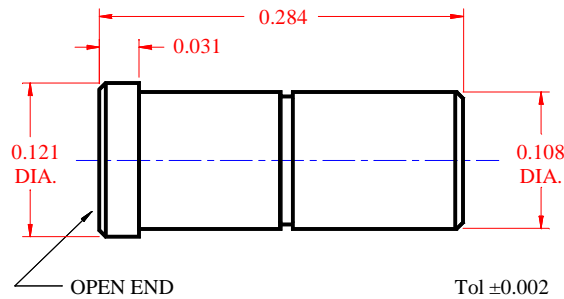


Figure 3 RO Socket # 9871/ 9871LF Mechanical Dimensions

RO Part #	9740	9740LF
Description:	Socket, 0.060 DIA. PIN	Socket, 0.060 DIA. PIN
Manufacturer:	Amp	Amp
Manuf. Part #	2-50871-3 or (RO's choice) 2-50871-2	2-50871-2
Contact Resistance:	< 15 mΩ	< 15 mΩ
Insert/ Extract Force:	min 0.5 oz., max 56 oz.	min 0.5 oz., max 56 oz.
Internal Hole Depth:	0.275 in min.	0.275 in min.
PCB Hole Size:	0.105 ±0.002	0.105 ±0.002
Materials:	copper (body), Beryllium copper (spring)	copper (body), Beryllium copper (spring)
Plating:	tin or gold over nickel (RO's choice) (body), gold over nickel (spring)	gold over nickel (body), gold over nickel (spring)

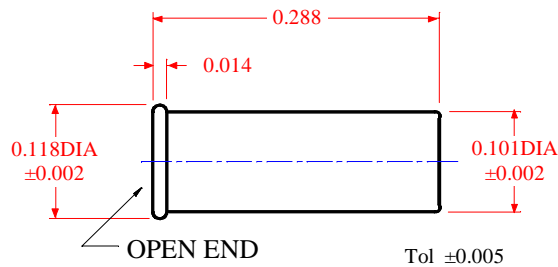


Figure 4 RO Socket #9740 Mechanical Dimensions

RO Part #	9748	9748LF
Description:	Socket, 0.080 DIA. PIN	Socket, 0.080 DIA. PIN
Manufacturer:	Mill-Max	Mill-Max
Manuf. Part #	0394-0-15-01-07-27-10-0	0394-0-15-15-07-27-10-0
Contact Resistance:	???	???
Extraction Force:	typ 7 oz.	typ 7 oz.
Internal Hole Depth:	0.352 in min.	0.352 in min.
PCB Hole Size:	0.122 ±0.002	0.122 ±0.002
Materials:	brass #360, 1/2H (body), Beryllium copper (spring)	brass #360, 1/2H (body), Beryllium copper (spring)
Plating:	tin over nickel (body), gold over nickel (spring)	gold over nickel (body), gold over nickel (spring)

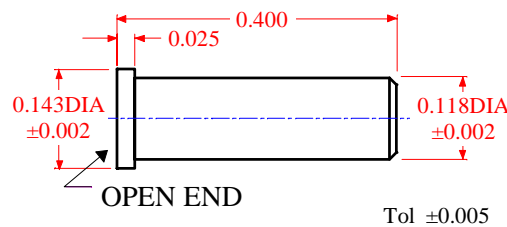


Figure 5 RO Socket # 9748/ 9748LF Mechanical Dimensions

RO Part #	9894	9894LF
Description:	Socket, 0.098 DIA. PIN	Socket, 0.098 DIA. PIN
Manufacturer:	Hypertronics	Hypertronics
Manuf. Part #	Identical to YSK025-002-AH except for shoulder	Identical to YSK025-002-AH except for shoulder
Contact Resistance:	< 0.8 mΩ	< 0.8 mΩ
Extraction Force:	min 6 oz., max 25 oz.	min 6 oz., max 25 oz.
Internal Hole Depth:	0.319 in min.	0.319 in min.
PCB Hole Size:	0.221 ±0.002 in	0.221 ±0.002 in
Materials:	brass (body), Beryllium copper (wires)	brass (body), Beryllium copper (wires)
Plating:	gold over nickel (body), gold over nickel (wires)	gold over nickel (body), gold over nickel (wires)

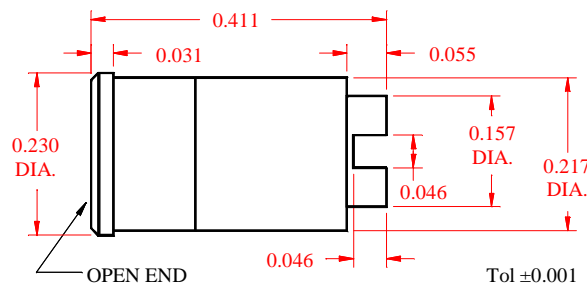


Figure 6

RO Part #	9872	9872LF
Description:	Socket, 0.138 DIA. PIN	Socket, 0.138 DIA. PIN
Manufacturer:	Hypertronics	Hypertronics
Manuf. Part #	Identical to MG138F31-A except for shoulder	Identical to MG138F31-A except for shoulder
Contact Resistance:	< 0.5 mΩ	< 0.5 mΩ
Extraction Force:	min 7 oz., max 32 oz.	min 7 oz., max 32 oz.
Internal Hole Depth:	0.319 in min.	0.319 in min.
PCB Hole Size:	0.265 ±0.002 in	0.265 ±0.002 in
Materials:	brass (body), Beryllium copper (wires)	brass (body), Beryllium copper (wires)
Plating:	gold over nickel (body), gold over nickel (wires)	gold over nickel (body), gold over nickel (wires)

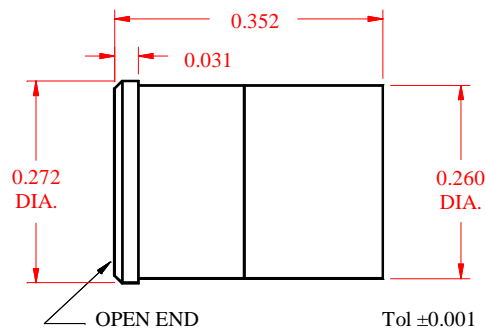


Figure 7 RO Socket # 9872/ 9872LF Mechanical Dimensions